

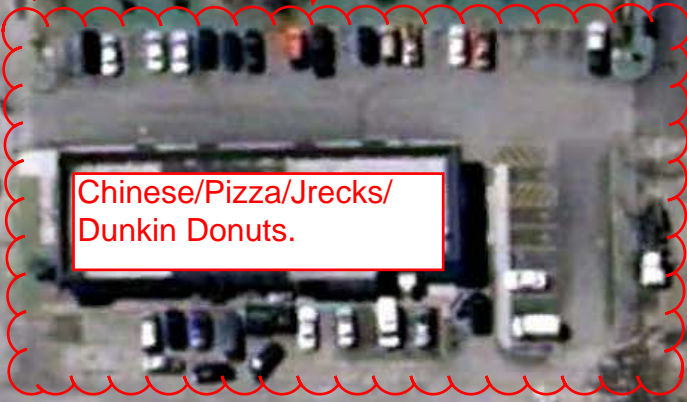
# PARKING AT JPW COMPANIES

Thompson Rd.

DON'T BLOCK THE FIRE HYDRANT!

EMPLOYEE PARKING IS NOT ALLOWED IN THIS AREA PERIOD! THIS IS NOT JPW PROPERTY. OUR VEHICLES PARKED IN THIS AREA HAVE MADE DELIVERIES IMPOSSIBLE FOR THE VENDORS, AND HAS LEFT THEIR EMPLOYEES WITHOUT PLACES TO PARK.

You may park up against the Verizon building. Please park close to each other to maximize space, but allow enough room to get out.



Chinese/Pizza/Jrecks/Dunkin Donuts.

Carrier Side.

NO Parking!

Verizon Building, NY 13206

Reserved Parking

All reserved parking to the right of main entrance.

Employees may park in this area unless marked as reserved

Open parking unless reserve sign is up.

JPW COMPANIES

NO PARKING BEHIND JPW BUILDING UNLESS PRE-AUTHORIZED BY JPW JR, JPW III, OR JODY!

43°04'45.14"N 76°05'17.06"W elev 408 ft

© 2011 Google  
© 2011 Europa Technologies  
Image © 2011 New York GIS

Google

Eyealt 10/11/11